

# "Madamina, il catalago è questo..."

Arie des Leporello aus "Don Giovanni" von Wolfgang Amadeus Mozart

Text von Lorenzo da Ponte - Arr. Michael Seeber

**Allegro**

Leporello  
Basso

Ma - da - mi - na, il ca - ta - lo - go è que - sto del - le bel - le, chea - moil pa - dron  
Schö - ne Don - na, dies ge - nau - e Re - gi - ster, es ent - hält sei - ne Lie - bes - af -

Flöte I/II  
Flute I/II

Oboe I/II

Fagott I/II  
Bassoon I/II

Es-Clarinette  
Clarinet E $\flat$ /Mib

Clarinetten I in B  
Clarinet I B $\flat$ /Sib

Clarinetten II in B  
Clarinet II B $\flat$ /Sib

Clarinetten III in B  
Clarinet III B $\flat$ /Sib

Clarinetten IV in B  
Clarinet IV B $\flat$ /Sib

Baßclarinetten in B  
Basso Clarinet B $\flat$ /Sib

Altsaxophon I/II in Es  
Alto Saxophone E $\flat$ /Mib

Tenorsaxophon in B  
Tenor Saxophone B $\flat$ /Sib

Baritonsaxophon in Es  
Baritone Sax. E $\flat$ /Mib

**Allegro**

Flügelhorn I/II in B  
Bugle I/II B $\flat$ /Sib

Trompete I/II in B  
Trumpet I/II B $\flat$ /Sib

Corno I/II in F  
Horn I/II F/Fa

Tenorhorn in B  
Tenor Tuba B $\flat$ /Sib

Baritonhorn in C  
Baritone/Euphonium

Bässe/Kontrabass  
in C  
Tuba/String Bass



© 2000 SEEGER FILM Verlag - Pierlstraße 33 9020 Klagenfurt

[www.seeberfilm.com](http://www.seeberfilm.com) Alle Rechte vorbehalten - jede widerrechtliche Vervielfältigung wird geahndet.

- Kat. No. 1005 202 700 -

Leporello

mi - o, un ca - ta - lo - go e - gli è che ho fatt' i - o, os - ser - va - te, leg - ge - te con  
 fä - ren; der Ver - fas - ser des Werks steht vor Ih - nen, wenn's ge - fäl - lig, so trag' ich es

Fl. I/II

Oboe I/II

Fagott I/II  
Bsn. I/II

Es-Clar.  
Clar. Eb/Mib

Clar. I

Clar. II

Clar. III

Clar. IV

Baßclar.  
Basso Cl.

Altsax.  
Alto Sax.

Tensax.  
Tenor Sax.

Barsax.  
Bar. Sax.

Fgh. I/II  
Bugle/II

Trp. I/II

Corno I/II  
Hr. I/II

Tenorh.  
Ten. Tb.

Barit.

Bässe  
Basses

Leporello  
me, os - ser - va - te, leg - ge - te con me.  
vor, wenn's ge - fäl - lig, so trag' ich es vor.

Fl. I/II  
f

Oboe I/II  
f

Fagott I/II  
Bsn. I/II  
f

Es-Clar.  
Clar. Eb/Mib  
f

Clar. I  
f

Clar. II  
f

Clar. III  
f

Clar. IV  
f

Baßclar.  
Basso Cl.  
f

Altsax.  
Alto Sax.  
f

Tensax.  
Tenor Sax.  
Fagott  
f

Barsax.  
Bar. Sax.  
f

Fgh. I/II  
Bugle/II  
ad lib.  
f

Trp. I/II

Corno I/II  
Hr. I/II  
f

Tenorh.  
Ten. Tb.  
Fagott  
f

Barit.  
f

Bässe  
Basses  
f

Leporello

In I - ta - lia sei - cen - toe qua - ran - ta, in La -  
 In I - ta - lien sechs - hun - dert - und - vier - zig, hier in

Fl. I/II

Oboe I/II

Fagott I/II  
Bsn. I/II

Es-Clar.  
Clar. Eb/Mib

Clar. I

Clar. II

Clar. III

Clar. IV

Baßclar.  
Basso Cl.

Altsax.  
Alto Sax.

Tensax.  
Tenor Sax.

Barsax.  
Bar. Sax.

Fgh. I/II  
Bugle/II

Trp. I/II

Corno I/II  
Hr. I/II

Tenorh.  
Ten. Tb.

Barit.

Bässe  
Basses



Leporello  
 u - na, ma in I - spag - na ma in I - spag - na son già mil - le tre,  
 Per - sien, a - ber in Spa - nien, ja, in Spa - nien schon tau - send und drei,

Fl. I/II

Oboe I/II  
*sfp* *p* *sfp*

Fagott I/II  
 Bsn. I/II  
*sfp* *p* *sfp*

Es-Clar.  
 Clar. Eb/Mib  
*sfp* *p* *sfp*

Clar. I  
*sfp* *p* *sfp*

Clar. II  
*sfp* *p* *sfp*

Clar. III  
*sfp* *p* *sfp*

Clar. IV  
*sfp* *p* *sfp*

Baßclar.  
 Basso Cl.

Altsax.  
 Alto Sax.  
*sfp* *p* *sfp*

Tensax.  
 Tenor Sax.  
*sfp* *p* *sfp*

Barsax.  
 Bar. Sax.  
*sfp* *p* *sfp*

Fgh. I/II  
 Bugle/II  
*sfp* *p* *sfp*

Trp. I/II

Corno I/II  
 Hr. I/II  
*sfp* *p*

Tenorh.  
 Ten. Tb.  
*sfp* *p* *sfp*

Barit.  
*sfp* *p* *sfp*

Bässe  
 Basses  
*sfp* *p* *sfp*

MUSTER

**B**

Leporello  
 mil - le tre, mil - le tre. V'han fra que - ste con - ta - di - ne,  
 tau - sen - drei, tau - send - drei. Hier ein schmuk - kes Kam - mer - kätz - chen,

Fl. I/II  
*a 2*  
*p*

Oboe I/II  
*a 2*  
*p*

Fagott I/II  
 Bsn. I/II  
*a 2*  
*p*

Es-Clar.  
 Clar. Eb/Mib  
*p*

Clar. I  
*p*

Clar. II  
*p*

Clar. III  
*p*

Clar. IV  
*p*

Baßclar.  
 Basso Cl.  
*p*

Altsax.  
 Alto Sax.  
*I.*  
*p*

Tensax.  
 Tenor Sax.  
*a 2*  
*p*  
*Fagott*  
*p*

Barsax.  
 Bar. Sax.  
*a 2*  
*p*

Fgh. I/II  
 Bugle/II  
*a 2*  
*p*

Trp. I/II

Corno I/II  
 Hr. I/II  
 34  
*a 2*  
*p*

Tenorh.  
 Ten. Tb.  
*I.*  
*p*

Barit.  
*I.*  
*p*

Bässe  
 Basses  
*p*

Leporello  
*ca - me - rie - re cit - ta - di - ne, vñhan con - tes - se, ba - ro - nes - se, mar - che - sa - ne, prin - ci -*  
*dort ein net - tes Bür - ger - schätz - chen, Kam - mer - zo - fen, Ba - ro - nes - sen, hoch - ge - bo - re - ne Prin -*

Fl. I/II

Oboe I/II

Fagott I/II  
 Bsn. I/II

Es-Clar.  
 Clar. Eb/Mib

Clar. I

Clar. II

Clar. III

Clar. IV

Baßclar.  
 Basso Cl.

Altsax.  
 Alto Sax.

Tensax.  
 Tenor Sax.

Barsax.  
 Bar. Sax.

Fgh. I/II  
 Bugle/II

Trp. I/II

Corno I/II  
 Hr. I/II

Tenorh.  
 Ten. Tb.

Barit.

Bässe  
 Basses

Leporello

pes - se, e vhan don - ne d'o - gni gra - do, d'og - ni for - ma, d'og - nie - tà, d'og - ni for - ma, d'og - ni e - tà.  
 zes - sen, Mäd - chen sind's von je - dem Stan - de, je - der Gat - tung und Ge - stalt, schön und häß - lich, jung und alt.

Fl. I/II

Oboe I/II

Fagott I/II  
Bsn. I/II

Es-Clar.  
Clar. Eb/Mib

Clar. I

Clar. II

Clar. III

Clar. IV

Baßclar.  
Basso Cl.

Altsax.  
Alto Sax.

Tensax.  
Tenor Sax.

Barsax.  
Bar. Sax.

Fgh. I/II  
Bugle/II

Trp. I/II

45

Corno I/II  
Hr. I/II

Tenorh.  
Ten. Tb.

Barit.

Bässe  
Basses

*cresc.*

*f*

*a 2*

*p*

*ad lib. I*

*ad lib.*

*C*

Leporello

In I - ta - lia sei - cen - toe qua - ran - ta, in La -  
 In I - ta - lien sechs - hun - dert - und - vier - zig, hier in

Fl. I/II

Oboe I/II

Fagott I/II  
Bsn. I/II

Es-Clar.  
Clar. Eb/Mib

Clar. I

Clar. II

Clar. III

Clar. IV

Baßclar.  
Basso Cl.

Altsax.  
Alto Sax.

Tensax.  
Tenor Sax.

Barsax.  
Bar. Sax.

Fgh. I/II  
Bugle/II

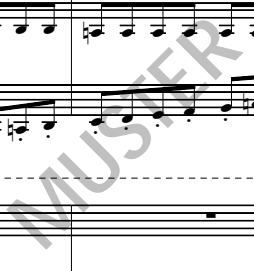
Trp. I/II

Corno I/II  
Hr. I/II

Tenorh.  
Ten. Tb.

Barit.

Bässe  
Basses



Leporello

ma - gna due - cen - toe trent' u - na, cen - to in Fran - cia, in  
 Deutsch - land zwei - hun - dert - und - drei - ßig, hun - dert in Frank - reich und

Fl. I/II

Oboe I/II

Fagott I/II  
Bsn. I/II

Es-Clar.  
Clar. Eb/Mib

Clar. I

Clar. II

Clar. III

Clar. IV

Baßclar.  
Basso Cl.

Altsax.  
Alto Sax.

Tensax.  
Tenor Sax.

Barsax.  
Bar. Sax.

Fgh. I/II  
Bugle/II

Trp. I/II

Corno I/II  
Hr. I/II

55

Tenorh.  
Ten. Tb.

Barit.

Bässe  
Basses

Leporello  
 Tur - chia novant' u - na, ma, ma in I - spag - na ma in I -  
 neun - zig in Per - sien, a - ber a - ber in Spa - nien, ja, in

Fl. I/II  
 I.

Oboe I/II  
 p  
 a 2

Fagott I/II  
 Bsn. I/II  
 p

Es-Clar.  
 Clar. Eb/Mib  
 p

Clar. I  
 p

Clar. II  
 p

Clar. III  
 p

Clar. IV  
 p

Baßclar.  
 Basso Cl.  
 p

Altsax.  
 Alto Sax.  
 p

Tensax.  
 Tenor Sax.  
 p

Barsax.  
 Bar. Sax.  
 p

Fgh. I/II  
 Bugle/II  
 p

Trp. I/II

Corno I/II  
 Hr. I/II  
 60  
 a 2  
 p

Tenorh.  
 Ten. Tb.

Barit.

Bässe  
 Basses

Leporello  
 spag - na son già mil - le tre, mil - le tre,  
 Spa - nien schon tau - send und drei, tau - send - drei,

Fl. I/II

Oboe I/II  
*sfp* a 2

Fagott I/II  
 Bsn. I/II  
*sfp*

Es-Clar.  
 Clar. Eb/Mib  
*sfp*

Clar. I  
*sfp*

Clar. II  
*sfp*

Clar. III  
*sfp*

Clar. IV  
*sfp*

Baßclar.  
 Basso Cl.  
*sfp*

Altsax.  
 Alto Sax.  
*sfp*

Tensax.  
 Tenor Sax.  
*sfp*

Barsax.  
 Bar. Sax.  
*sfp*

Fgh. I/II  
 Bugle/II

Trp. I/II

65  
 Corno I/II  
 Hr. I/II  
*sfp*

Tenorh.  
 Ten. Tb.  
*sfp* *p*

Barit.  
*sfp* *p*

Bässe  
 Basses  
*sfp*

D

Leporello  
 mil - le tre. V'han fra que - ste con - ta - di - ne, ca - me - rie - ree cit - ta - di - ne, v'han con - tes - se, ba - ro - nes - se, mar - che - sa - ne, prin - ci -  
 taus - send - drei. Hier ein schmuk - kes Kam - mer - kätz - chen, dort ein net - tes Bür - ger - schätz - chen, Kam - mer - zo - fen, Ba - ro - nes - sen, hoch - ge - bo - re - ne Prin -

Fl. I/II  
*f* *p* *f* *p*

Oboe I/II  
*p*

Fagott I/II  
 Bsn. I/II  
*f* *p* *f* *p*

Es-Clar.  
 Clar. Eb/Mib  
*p*

Clar. I  
*sf* *p* *sf* *p*

Clar. II  
*f* *p* *f* *p*

Clar. III  
*f* *p* *f* *p*

Clar. IV  
*f* *p* *f* *p*

Baßclar.  
 Basso Cl.  
*f*

Altsax.  
 Alto Sax.  
*sf* *p* *sf* *p*

Tensax.  
 Tenor Sax.  
*f* *p* *f* *p*

Barsax.  
 Bar. Sax.  
*f*

D

Fgh. I/II  
 Bugle/II

Trp. I/II

Corno I/II  
 Hr. I/II  
*fp* *fp*

Tenorh.  
 Ten. Tb.  
*f* *p* *f* *p*

Barit.  
*f* *p* *f* *p*

Bässe  
 Basses  
*f* *p* *f* *p*

Leporello  
 pes-se, e vhan don-ne d'o-gni gra-do, d'og-ni for-ma, d'og-nie-tà, d'og-ni for-ma, d'og-nie-tà  
 zes-sen, Mäd-chen sind's von je-dem Stan-de, je-der Gat-tung und Ge-stalt, schön und häß-lich, jung und

Fl. I/II  
*cresc.* *f* *fp* *fp* *fp* *fp*

Oboe I/II  
*cresc.* *f* *fp* *fp* *fp* *fp*

Fagott I/II  
 Bsn. I/II  
*cresc.* *f* *f* *p* *f* *p* *f* *f* *p* *f* *p*

Es-Clar.  
 Clar. Eb/Mib  
*cresc.* *f* *fp* *fp* *fp*

Clar. I  
*cresc.* *f* *f* *p* *f* *p* *f* *p* *f* *p* *f* *p*

Clar. II  
*cresc.* *f* *f* *p* *f* *p* *f* *p* *f* *p* *f* *p*

Clar. III  
*cresc.* *f* *a2* *f* *p* *f* *p* *f* *p* *f* *p* *f* *p*

Clar. IV  
*cresc.* *f* *a2* *f* *p* *f* *p* *f* *p* *f* *p* *f* *p*

Baßclar.  
 Basso Cl.  
*a2* *f* *p* *f* *p* *f* *p* *f* *p* *f* *p* *f* *p*

Altsax.  
 Alto Sax.  
*cresc.* *f* *f* *p* *f* *p* *f* *p* *f* *p* *f* *p*

Tensax.  
 Tenor Sax.  
*cresc.* *f* *f* *p* *f* *p* *f* *p* *f* *p* *f* *p*

Barsax.  
 Bar. Sax.  
*p* *cresc.* *f* *f* *p* *f* *p* *f* *p* *f* *p* *f* *p*

Fgh. I/II  
 Bugle/II  
*cresc.* *f* *fp* *fp* *fp* *fp*

Trp. I/II

Corno I/II  
 Hr. I/II  
 75 *a2* *fp* *fp* *fp* *fp*

Tenorh.  
 Ten. Tb.  
*cresc.* *f* *a2* *f* *p* *f* *p* *f* *p* *f* *p* *f* *p*

Barit.  
*a2* *cresc.* *f* *f* *p* *f* *p* *f* *p* *f* *p* *f* *p*

Bässe  
 Basses  
*a2* *cresc.* *f* *f* *p* *f* *p* *f* *p* *f* *p* *f* *p*

Leporello  
 tà, d'og ni for ma, d'og nie tà.  
 ihn, schön und häß lich, jung und alt.

Fl. I/II  
*fp fp p cresc. f*

Oboe I/II  
*fp fp p cresc. f*

Fagott I/II  
 Bsn. I/II  
*f p f p cresc. f*

Es-Clar.  
 Clar. Eb/Mib  
*fp fp cresc. f*

Clar. I  
*f p f p cresc. f*

Clar. II  
*f p f p cresc. f*

Clar. III  
*f p f p cresc. f*

Clar. IV  
*f p f p a 2 cresc. f*

Baßclar.  
 Basso Cl.  
*f p f p a 2 cresc. f*

Altsax.  
 Alto Sax.  
*f p f p cresc. f*

Tensax.  
 Tenor Sax.  
*f p f p a 2 cresc. f*

Barsax.  
 Bar. Sax.  
*f p f p a 2 cresc. f*

Fgh. I/II  
 Bugle/II  
*fp fp p cresc. f*

Trp. I/II

Corno I/II  
 Hr. I/II  
*fp fp p cresc. f*

Tenorh.  
 Ten. Tb.  
*f p f p cresc. f*

Barit.  
*f p f p cresc. f*

Bässe  
 Basses  
*f p f p cresc. f*